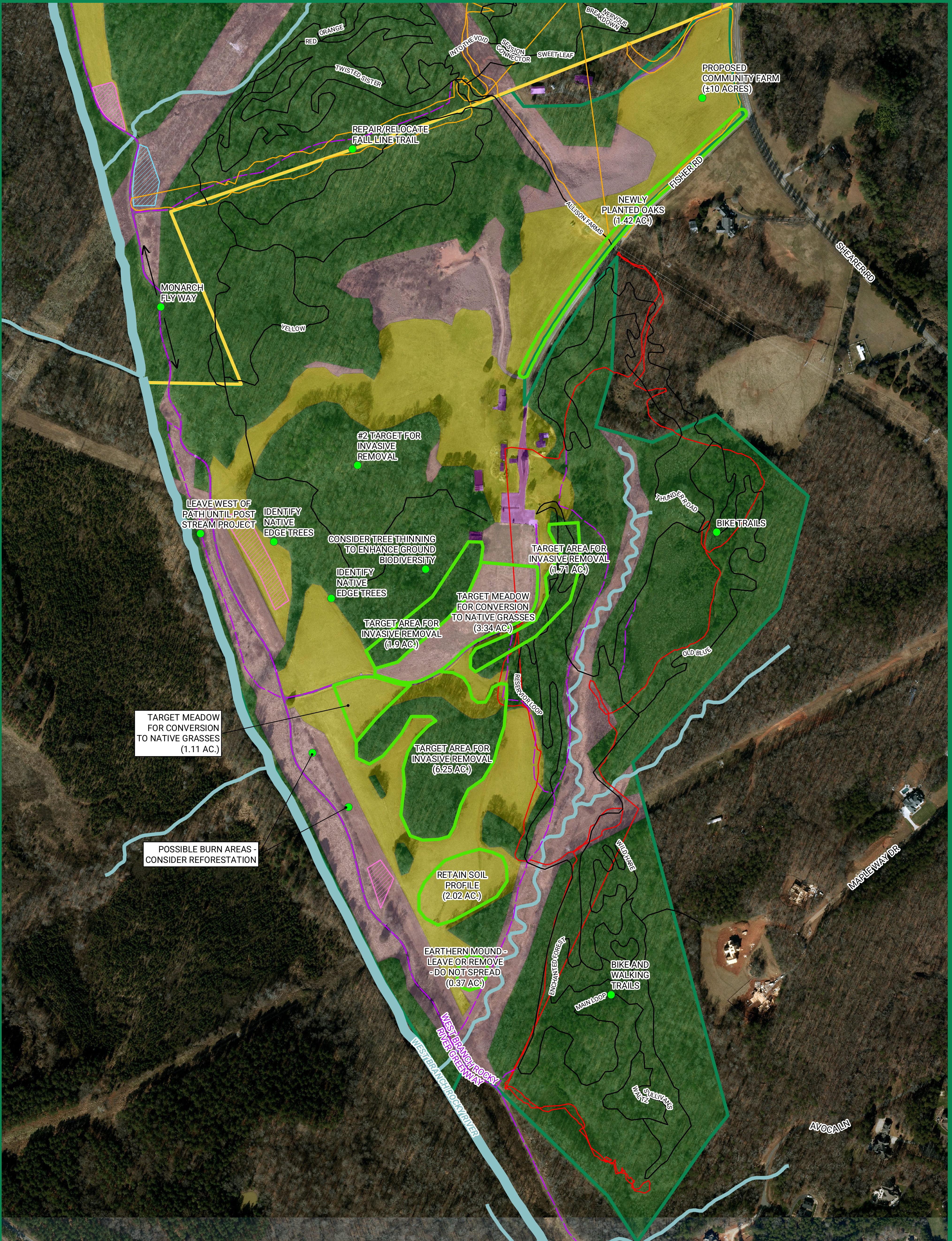
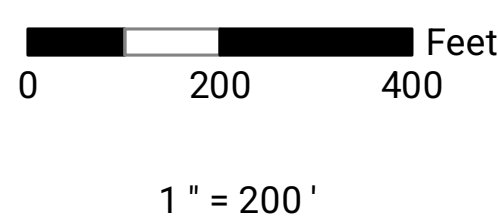
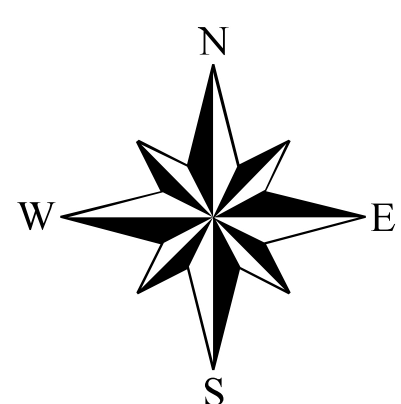


Fisher Farm Park August 2023



Contact:
Dave Cable
704-577-2004



LEGEND

- Abersham Park (Unprotected)
- Fisher Farm Park
- Bike Trails
- Abersham Emergency Access
- Greenways
- Fisher Farm Emergency Access
- Current Milkweed Protection Site
- Potential Milkweed Protection Site
- Streams, Rivers, and Waterbodies
- Forested Land
- Grassy/Maintained Land
- Impervious Surface
- Early Successional/Scrubby Land

